

FIBI-STYLE TENT STOVE V

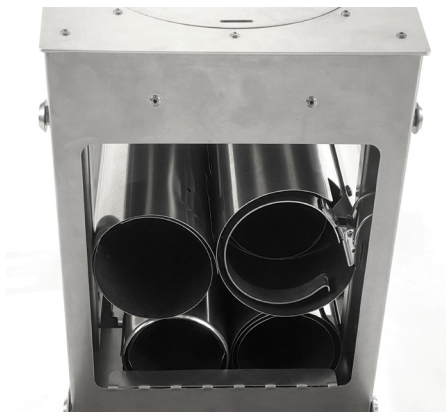
FIBI-STYLE EICHBERGSTRASSE 6 5704 EGLISWIL

SWITZERLAND



FIBI-STYLE Tent Stove V

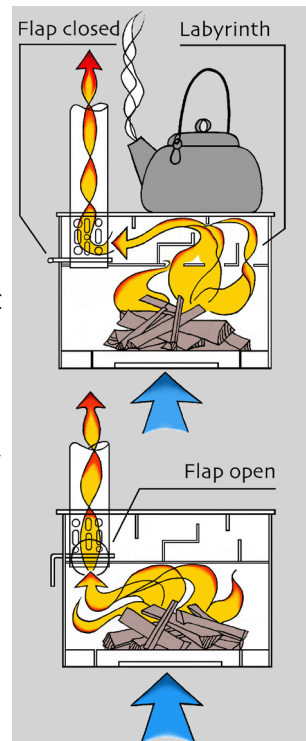
Suggestions of customers as well as our own experiences have led us to design a new stove. It goes without saying that we have retained all the nifty details from stove models II and IV in the new tent stove model V. In particular, the function for switching the flue gas flow for optimal heat utilization. But of course, we have been able to improve and refine many details in the design.



New there are two versions of our stove: with and without windows. The door is now located on the side of the stove and it opens up downwards which means that there won't be any embers nor pieces of burning wood falling out and on the ground. This not only improves the security but makes the stowing of the chimney elements inside the stove for transportation even easier. As a supplement you can now acquire a pan support which can easily be clicked in on the small side of the stove. Like its predecessors, this stove is able to effortlessly heat a tent as well as its useful for cooking. The fire opening on the hearth plate is equipped

with a removable plate. This enhances the cooking performance, even if the used pots have uneven bottoms. If you choose the variant with the two glass windows, you can watch the flames as you are heating with the stove. Not only the warmth, but the special atmosphere as well will make your tent more inviting and homely. Our FIBI-STYLE Tent Stove V is extremely efficient.

The reason for this is that it's equipped with all the technical details as you will find in a "Swedish stove" for house use. The legs can be folded in and all chimney elements, the spark protector and the heat insulation tube can be fitted inside your stove. This way, the stove and all its accessories can be stowed into the transport box which ensures a gentle transport and storage.



- swiss - all parts are manufactured and assembled in Switzerland
- hot - your stove will heat your tent with ease
- portable - compact, everything can be stowed into the transport box (including chimney elements)
- simple - user-friendly assembly without tools
- robust - robust construction made of stainless steel
- smart - equipped with: removable hearth plate, supply air regulator, heat bypass regulator, removable fire grate, ash drawer, folding legs, with or without a window as desired, as well as a pan support that can be attached.



Measurements and weight	L	B	H	kg
Stove without window	51 cm	23 cm	35 cm	12 kg
Stove with windows	51 cm	23 cm	35 cm	14 kg
Stove assembled	51 cm	23 cm	48 cm	
Chimney element	45 cm	Ø 7 cm	41.5 cm	Construction height 0.33 kg
Spark protector	37 cm	Ø 7.4 cm		0.2 kg
Heat insulation tube	44 cm	Ø 9.5 cm		0.6 kg
Pan support	18.7 cm	21.4 cm	3.5 cm	0.3 kg
Transport box	60 cm	40 cm	25 cm	4 kg



Technical feature:

As with our previous models we have built in the variable flue gas distribution system in this model. With this function, the draft in the furnace can either be guided directly into the chimney or through a "labyrinth", by switching the flap in its respective position. If you put on draft, you have an optimal air supply when firing. When the fire has developed and there is nice heat and embers, you can close the smoke flap and direct hot smoke gases through the "labyrinth". As a result, the stove emits its heat optimally and at the same time the combustion is throttled. The consequence of this is that the stove is extremely economical in its consumption of firewood and a very high heating output is achieved.

Footnote:

The stove is made of stainless steel (1.4301). Therefore, it is not suitable for the use of hard coal, because the sulphur content of stone coal will lead to oxidation and pitting in a short time. We recommend burning only wood and charcoal in your stove.

